

# Evolution—Evidence of Change

## Lesson 2 Biological Evidence

Grade 7 Science Content Standards—3.c: Students know how independent lines of evidence from geology, fossils, and comparative anatomy provide the bases for the theory of evolution.

**Scan** Lesson 2 of your book. Read the headings and look at the illustrations. Predict three things that will be discussed.

1. \_\_\_\_\_
2. \_\_\_\_\_
3. \_\_\_\_\_

**Review Vocabulary**

**Define** adaptation, using your book or a dictionary.

adaptation

\_\_\_\_\_  
\_\_\_\_\_

**New Vocabulary**

**Write a paragraph** using all of the vocabulary terms.

comparative anatomy  
homologous structure  
embryology

\_\_\_\_\_  
\_\_\_\_\_  
\_\_\_\_\_  
\_\_\_\_\_  
\_\_\_\_\_

**Academic Vocabulary**

**Use a dictionary** to define analogous.

analogous

\_\_\_\_\_

Lesson 2 Biological Evidence (continued)

**Main Idea**

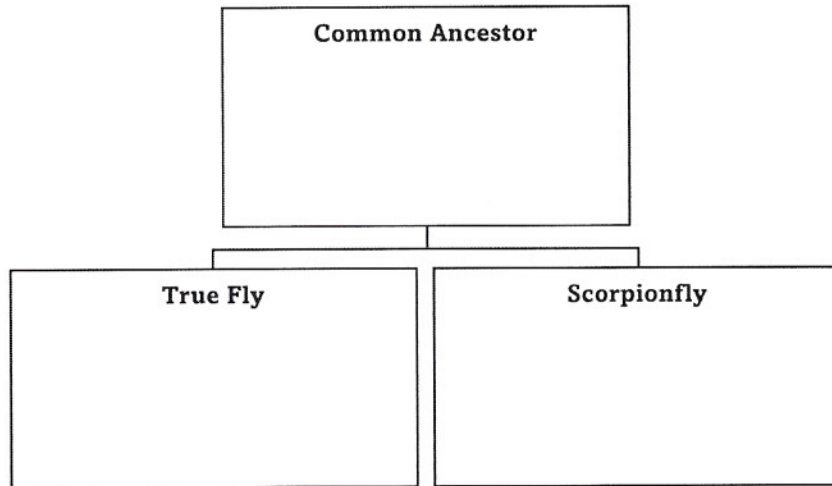
**Comparative Anatomy**

I found this information on page \_\_\_\_\_.

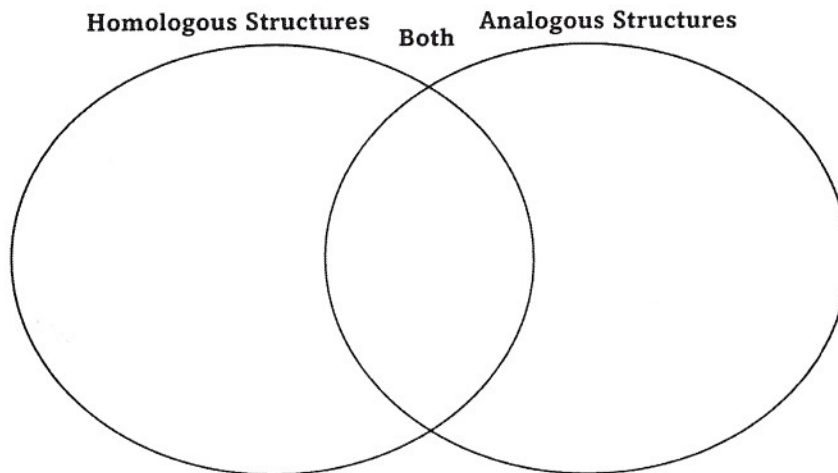
I found this information on page \_\_\_\_\_.

**Details**

**Model** the anatomies of the true fly, the scorpionfly, and their common ancestor.



**Compare and contrast** homologous structures and analogous structures by completing the Venn diagram.



**SUMMARIZE IT**

Summarize two main ideas of the above sections.

\_\_\_\_\_

\_\_\_\_\_

\_\_\_\_\_

Lesson 2 Biological Evidence (continued)

**Main Idea**

**Details**

**Comparative Anatomy**

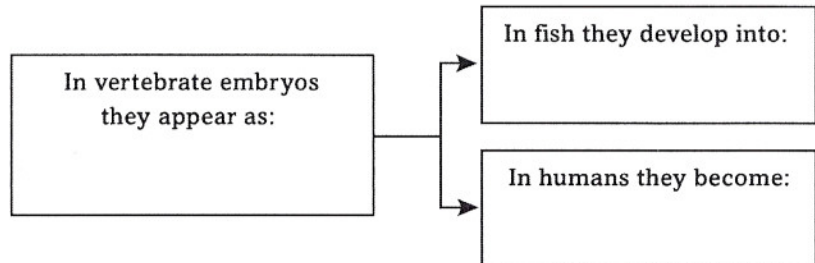
I found this information on page \_\_\_\_\_.

I found this information on page \_\_\_\_\_.

**Define** vestigial structure. Then give an example of a vestigial structure.

Example: \_\_\_\_\_

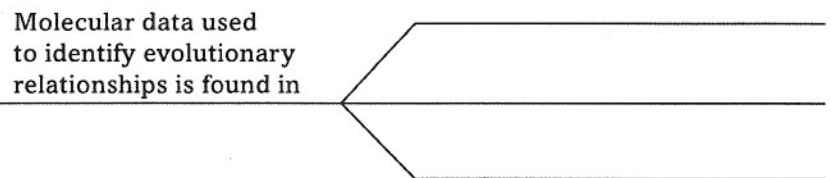
**Contrast** the development of pharyngeal pouches in fish and humans by completing the table.



**Molecular Biology**

I found this information on page \_\_\_\_\_.

**Organize** information by listing three types of molecules scientist use to identify evolutionary relationships among organisms



**SUMMARIZE IT**

Summarize two main ideas of the above sections.

\_\_\_\_\_

\_\_\_\_\_

\_\_\_\_\_

\_\_\_\_\_